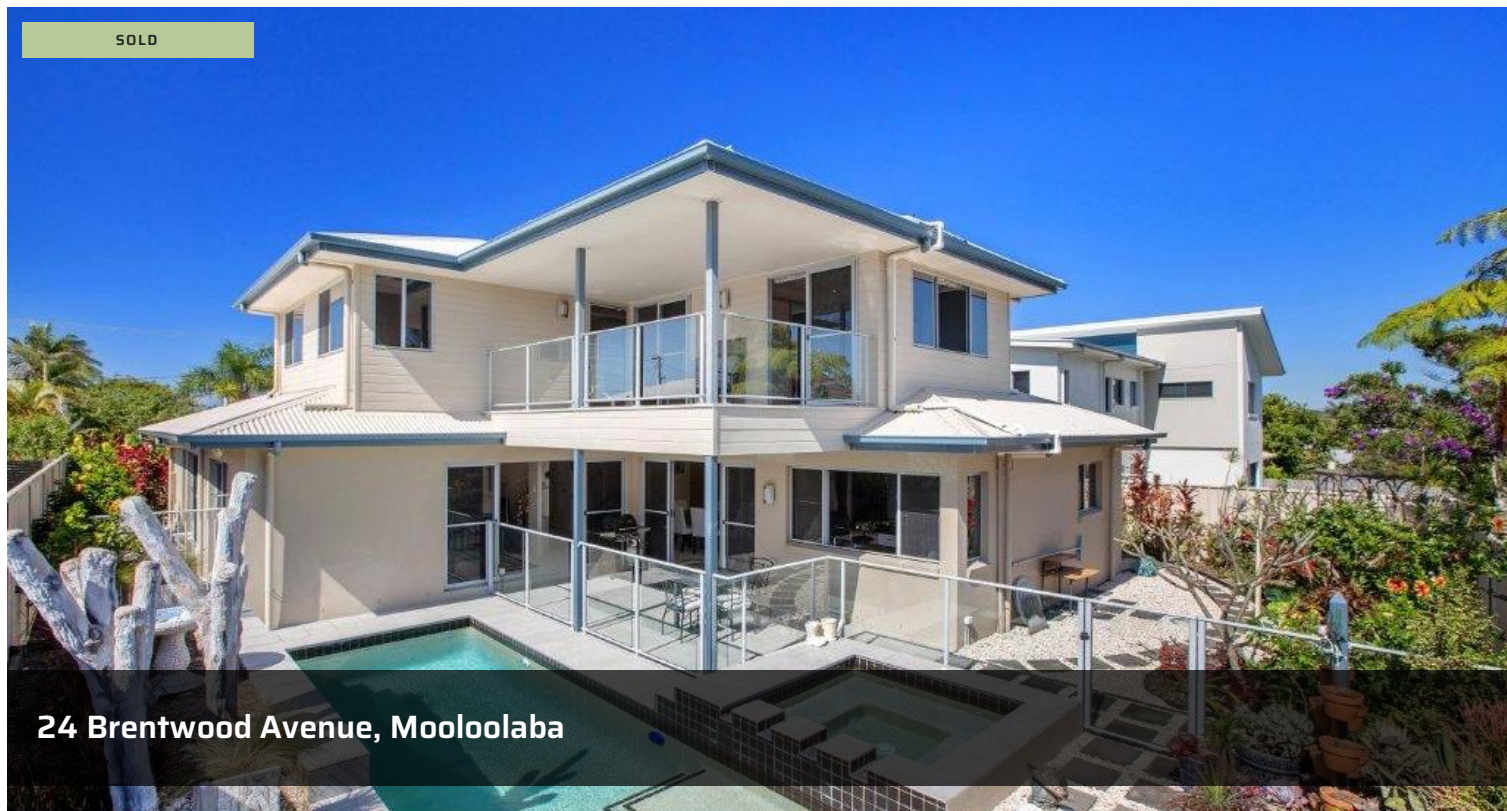
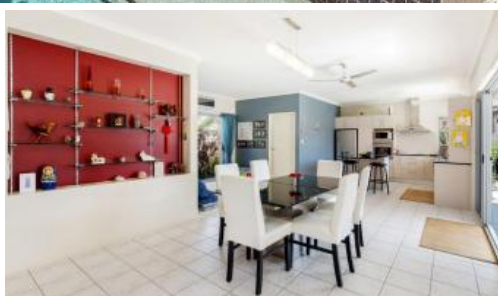


SOLD



24 Brentwood Avenue, Mooloolaba



In the Heart of it all...

Look no further nothing else to do except move in and enjoy this large Mooloolaba home.

Set on a low maintenance 551m2 block with a well designed home taking into account comfortable living, sea breezes and orientation you will find it hard to buy better.

With 4 large rooms throughout, plus a study, big family kitchen and 3 separate spacious living areas this home truly represents Sunshine coast living at it best.

Add to this the refreshing pool there to relax in with family and friends and the low maintenance gardens, you spend your time enjoying what life is all about.

Be on the beach in under 5 minutes drive (or walk there in 7-10minutes) and relax in the numerous coffee shops along the Mooloolaba esplanade in your own time after you have finished your swim...

4 bedrooms 2 bathrooms 2 car spaces

Price	SOLD
Property Type	Residential
Property ID	335

Agent Details

Ben Wilson - 0407 584 378

Office Details

Code Property Group
9/15 Nicklin Way Minyama,
QLD, 4575 Australia
07 5438 3444

code
PROPERTY GROUP

DOWNSTAIRS

- * Separate lounge and dining rooms.
- * Dining room flows onto modern kitchen
- * Direct access onto undercover veranda overlooking pool from both living rooms
- * Large functional modern kitchen with stone bench tops and island servery
- * Separate office - set up ready to go.
- * Large master bedroom with big walk-in-robe and large ensuite and external side access through sliding doors
- * Downstairs air-conditioned x 2splits
- * Big laundry with storage and external access
- * Automatic Double lock up garage with internal access to the house, with workspace and storage.
- * Side access

UPSTAIRS

- * Timber stairwell
- * 3 bedrooms upstairs all with BIRs
- * Additional living/rumpus room with storage cupboards
- * Large bathroom with tub and separate toilet
- * Fans throughout
- * Private undercover deck/balcony overlooking pool.

OUTSIDE

- * Landscaped pool and spa
- * Low maintenance block with easy care gardens
- * Fully fenced and secured
- * Great street appeal.

The above information provided has been furnished to us by the vendor/s. We have not verified whether or not that information is accurate and do not have any belief in one way or the other in its accuracy. We do not accept any responsibility to any person for its accuracy and do no more than pass it on. All interested parties should make and rely upon their own inquiries in order to determine whether or not this information is in fact accurate.